



GAT MONTHLY MEMBERSHIP PROGRESS REPORT

Results as of: 3/31/2024

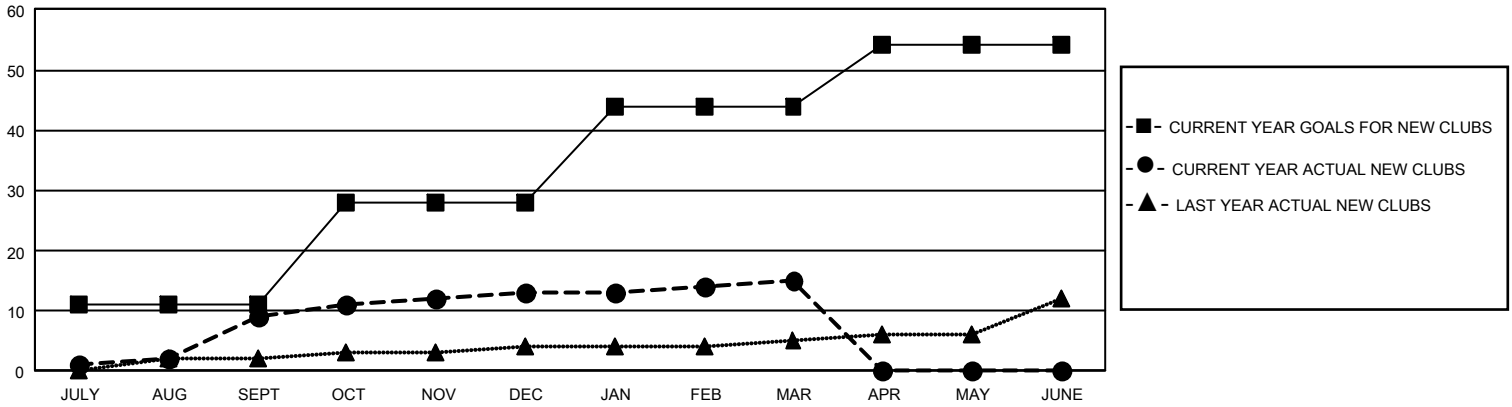
GMT Constitutional Area 1, Group A

REPORT DOES NOT INCLUDE CLUBS IN UNDISTRICTED AREAS.

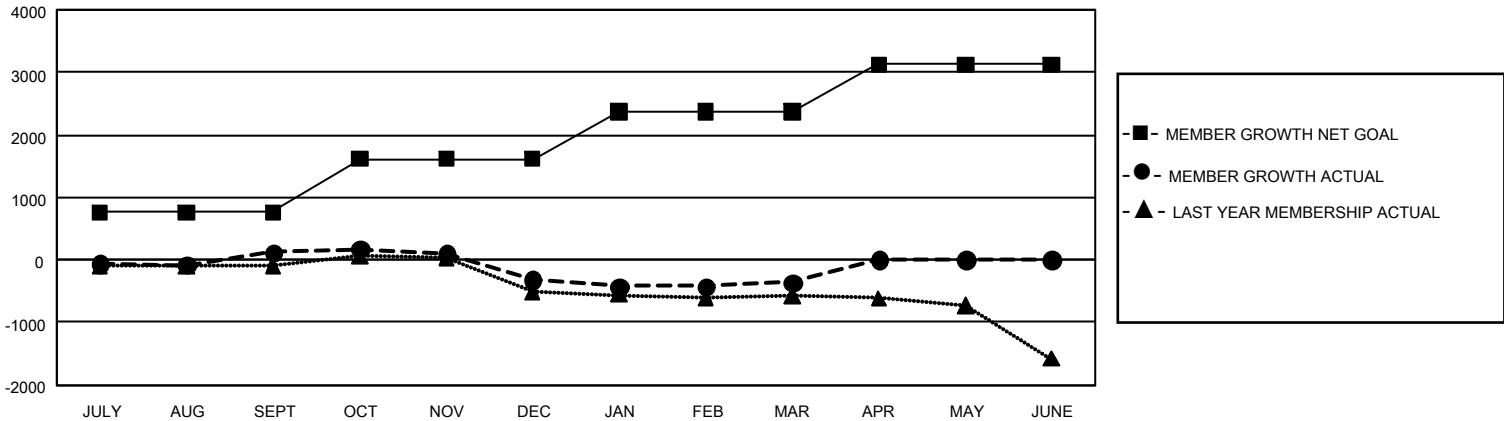
Clubs			
RESULTS FOR 2023-2024			
QUARTER	NEW CLUB GOAL	NEW CLUBS	DROPPED CLUBS
JULY/AUG/SEPT	33	9	11
OCT/NOV/DEC	51	4	16
JAN/FEB/MAR	48	2	4
APR/MAY/JUNE	30	0	0

Members			
RESULTS FOR 2023-2024			
QUARTER	MEMBER GROWTH NET GOAL	MEMBER GROWTH ACTUAL	DROPPED MEMBERS ACTUAL (including transfers)
JULY/AUG/SEPT	765	1,569	1,272
OCT/NOV/DEC	850	1,095	1,444
JAN/FEB/MAR	748	1,254	1,210
APR/MAY/JUNE	763	0	0

GOALS AND ACTUAL NEW CLUBS CUMULATIVE



GOALS AND ACTUAL MEMBERS CUMULATIVE



DROPPED CLUBS: 31	793 CLUBS OF 1,420 ADDED 1 OR MORE NEW MEMBERS	<u>GENDER DISTRIBUTION</u>	
		MALE	23,550 (63.21%)
<u>DROPPED MEMBERS</u>		FEMALE	13,686 (36.74%)
DECEASED	393	NON BINARY	7 (0.02%)
CLUB CANCELLED	133	PREFER NOT TO ANSWER	13 (0.03%)
OTHER	3,399	TOTAL FAMILY UNIT MEMBERS	5,989
TOTAL	3,925	FAMILY MEMBERS PAYING HALF DUES	3,064

[CLICK HERE FOR CUMULATIVE MEMBERSHIP DATA](#)